

# You Don't Own Me

Words & Music by John Madara & David White

♩ = 63

Gm



GRACE:

You don't own me. \_

*mf*

G-EAZY:

(Swing semiquavers)

You don't own me. \_

1. Woah, let's

go, but I'm Ger - ald and I can al - ways have just what I want.

She's that bad - dest I would love to flaunt. Take her shop - ping, you know Yves Saint Lau - rent, but

nope, (Nope) she ain't with it though, all be - cause she got her own dough.

N.C.

Boss bossed if you don't know, she could nev - er ev - er be a broke ho.

*poco rit.*

*a tempo*

**GRACE:**

2. You don't own me. — I'm not just  
 (3.) own me. — Don't try to

Cm



Gm



Cm



D



one of your — man - y toys.  
change me in — an - y way.

You don't own me. —  
You don't own me. —

Don't say I  
Don't tie me

Cm



Gm



G5



G



can't go with oth - er boys. \_\_\_\_\_  
down, 'cause I'd nev - er stay. \_\_\_\_\_

Don't \_\_\_\_\_ tell me

*p*

*f*

*Con pedale*

Em



Em7



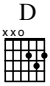

C



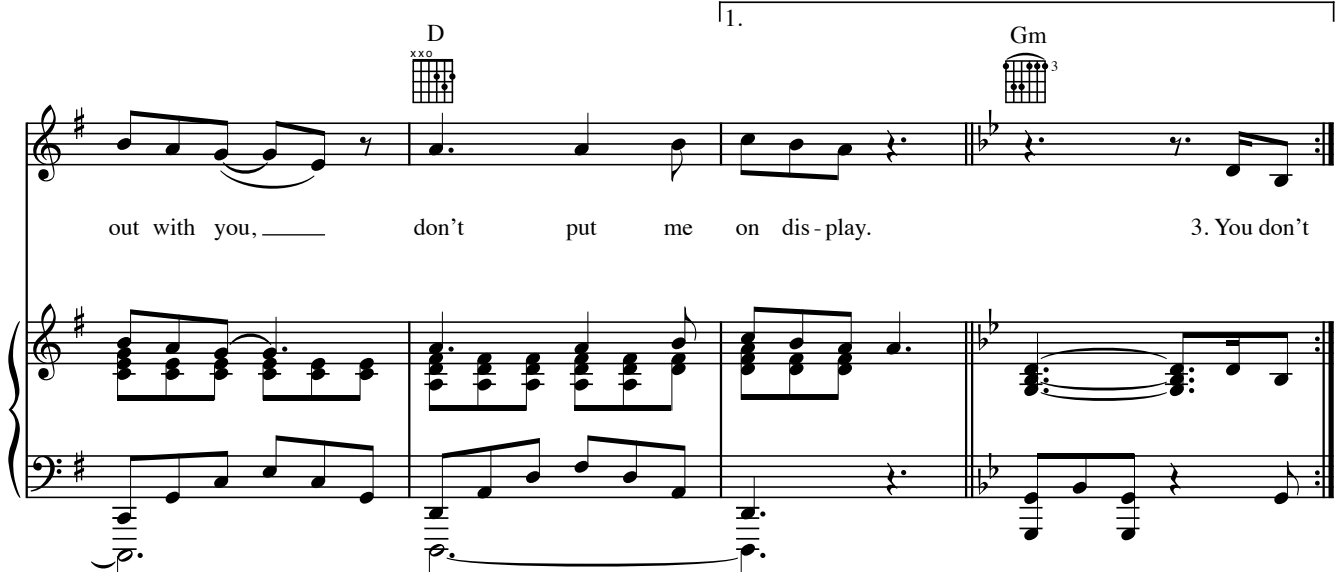
what to do \_\_\_\_\_ and don't \_\_\_\_\_ tell me what to say. —

Please, when I go

1.

D  Gm 

out with you, \_\_\_\_\_ don't put me on dis-play. 3. You don't



2.


Gm  N.C.

**G-EAZY:**  
(Swing semiquavers)

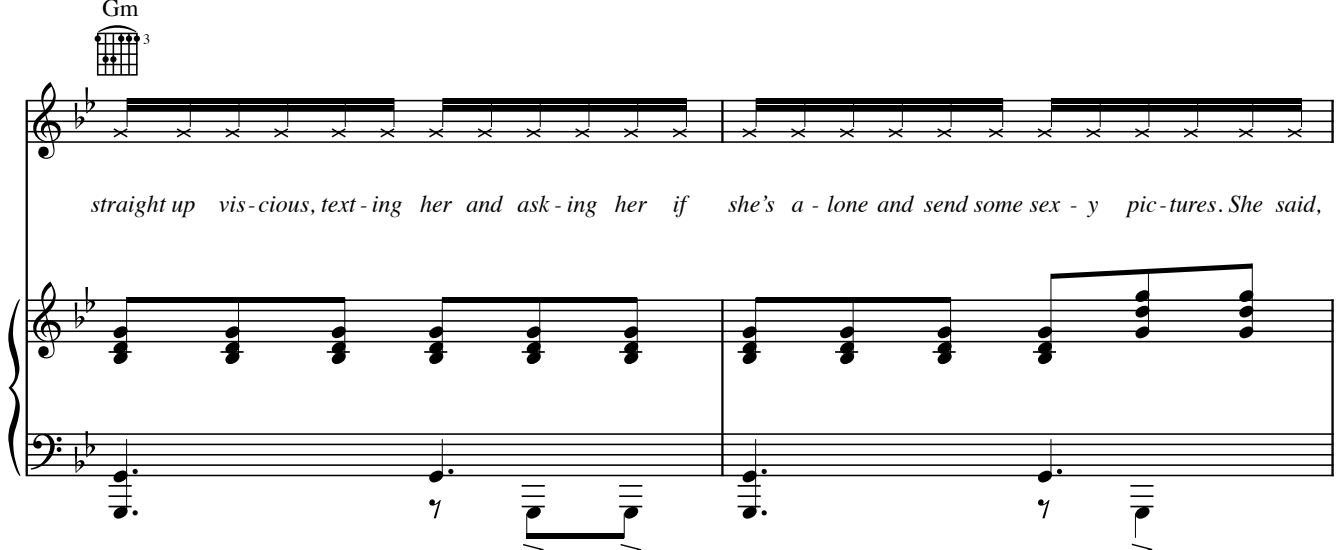
on dis-play. 4. Real-ly though, hon-est-ly, I get bored of ba-sic (No) She's the bad-dest,

*mf*



Gm 

straight up vis-cious, text-ing her and ask-ing her if she's a-lone and send some sex-y pic-tures. She said,



“no.” (What?) Well, god - damn, (Damn) she said, “come o - ver and see it for your - self.”

The first system consists of a vocal line and piano accompaniment. The vocal line is in a single staff with a treble clef and a key signature of two flats. It contains a series of eighth notes with lyrics. The piano accompaniment is in two staves (treble and bass clefs) and features a steady eighth-note bass line and a treble line with chords and some melodic movement.

Nev - er ask - ing for your help, in - de - pen - dent wom - an, she ain't for the shelf.

The second system continues the musical piece with a vocal line and piano accompaniment. The vocal line has a similar rhythmic pattern to the first system. The piano accompaniment maintains the same bass line and chordal structure.

Nah. (Nah) She's the one. Smoke with her un - til the... (Uh)

The third system includes guitar chord diagrams above the vocal line. The first measure is marked "N.C." (No Chords). The second measure has a Gm chord diagram (3-fingered). The third measure is marked "N.C.". The fourth measure has another Gm chord diagram (3-fingered). The vocal line and piano accompaniment continue with the same musical elements as the previous systems.

Stay - in' up un - til we see the sun, the bad - dest ev - er, swear she do it bet - ter than I've ev - er

seen it done. (Done) Yeah. (Done) Nev - er bor - row, she ain't nev - er loan. That's

Gsus2

**GRACE:**

when she told me she ain't nev - er, ev - er, ev - er, ev - er gon - na be owned. I

G



Em



Em7



don't \_\_\_\_\_ tell you what to say, \_ I don't \_\_\_\_\_ tell you what to do. \_ So

*Con pedale*

C



D



just let me be my - self, \_ that's all I ask of you. I'm \_

A<sup>b</sup>



Fm



Fm7



young, and I love to be young. I'm free, and I love to be free to

D $\flat$



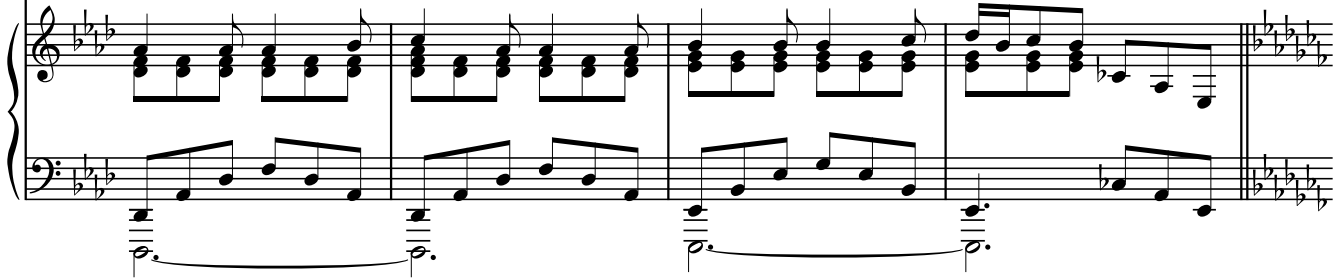
E $\flat$



E $\flat$ (b13)



live my life the way I want, - to say and do what - ev - er I please.



A $\flat$ m



*Vocal ad lib. fills*

D $\flat$ m

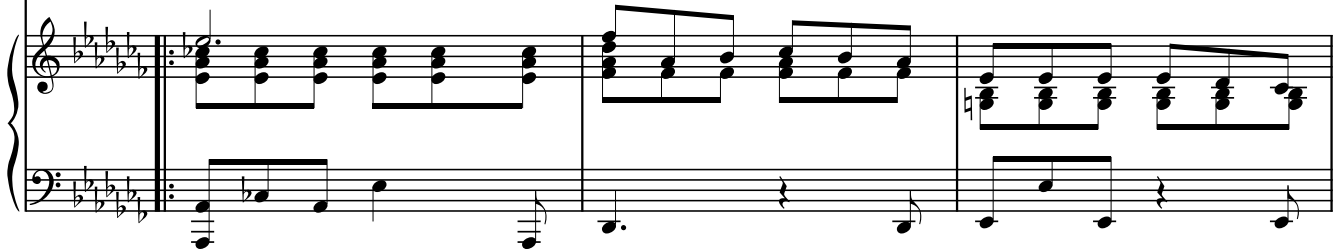


E $\flat$



Hup, hey.

(You don't own me.) — Oh, — no. —



*Play 4 times*

D $\flat$ m



A $\flat$ m



E $\flat$ sus4



A $\flat$ m



N.C.



Oh, — no. —

You don't own me. —

