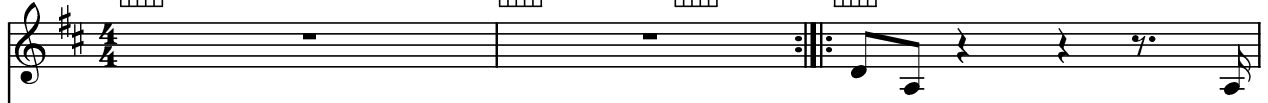


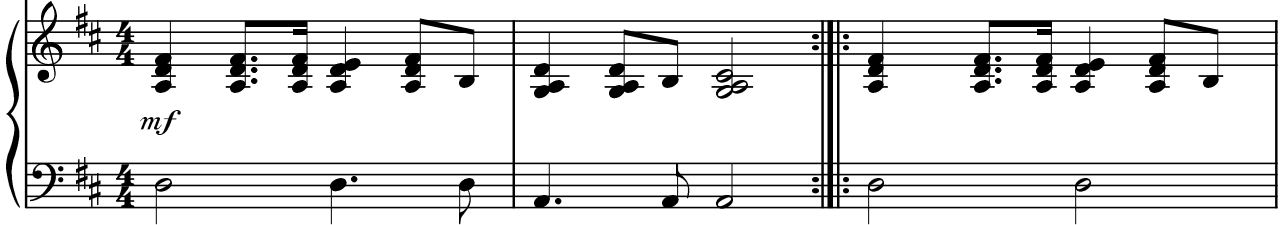
BABY CAN I HOLD YOU

Words and Music by Tracy Chapman

♩ = 74



1. Sor - ry }
2.) give me } is
3.) love you }



A7sus4



A7



Em



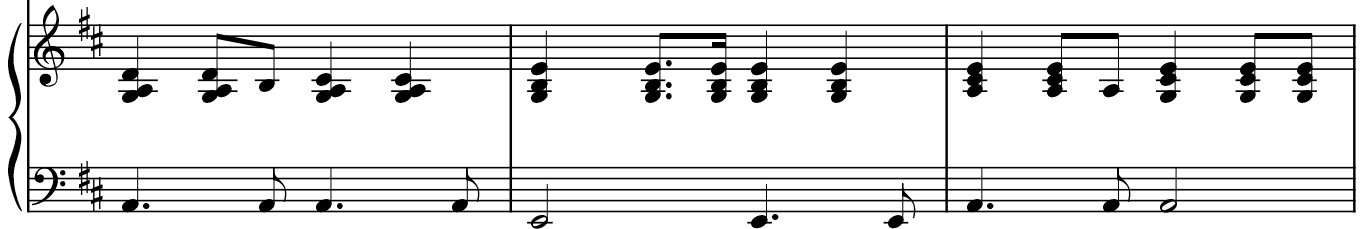
A



A7



all that you can't say. — Years gone by and



D



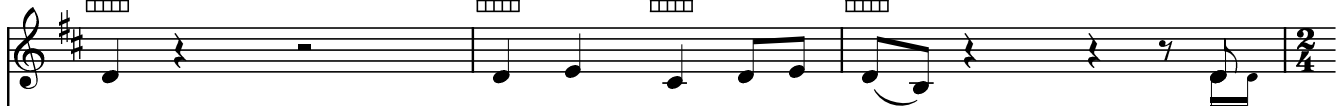
A7sus4



A7

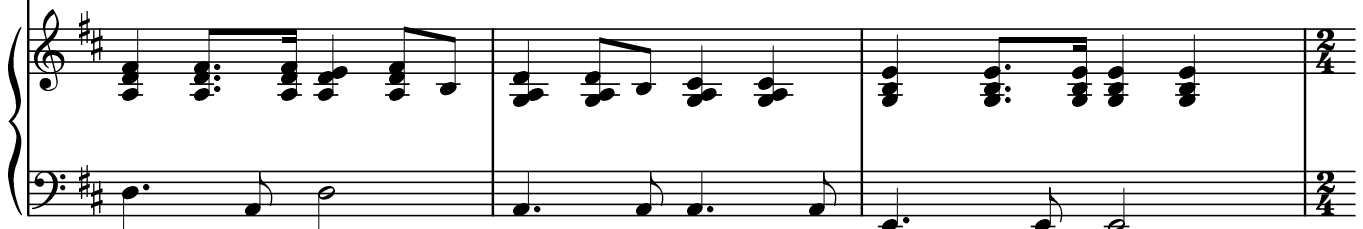


Em



still words don't come eas - i - ly, —

{ like
like
like I



1.

G A A7sus4 A7

sor - ry, like sor - ry. 2. For -
 give me, for - give me.
 love you, I love you.

2. §.

A7sus4 A7 D Em G

But you can say ba - by, ba - by, can I hold _ you to -

D Em G Bm

night? _ May-be, if I told you the right words, ooh, _ at the right _

To Coda ⊕ D.S. § al Coda

A D Em F#m G A

_ time, you'd be mine. 3. I

Coda

Em G D

Ba - by, can I hold ___ you to - night? _

This system contains the first two measures of the Coda. It features guitar chords for Em, G, and D. The vocal line begins with the lyrics 'Ba - by, can I hold ___ you to - night? _'. The piano accompaniment consists of a treble and bass clef with chords and moving lines.

Em G Bm

May - be if I told ___ you the right words, oo, ___ at the right _

This system contains the next two measures. Guitar chords are Em, G, and Bm. The lyrics are 'May - be if I told ___ you the right words, oo, ___ at the right _'. The piano accompaniment continues with chords and melodic lines.

A D Em G

___ time you'd be mine, ___ you'd be mine, _

This system contains the next two measures. Guitar chords are A, D, Em, and G. The lyrics are '___ time you'd be mine, ___ you'd be mine, _'. The piano accompaniment features chords and a melodic line in the treble clef.

D Em G A D

___ you'd be mine. _

This system contains the final two measures of the Coda. Guitar chords are D, Em, G, A, and D. The lyrics are '___ you'd be mine. _'. The piano accompaniment concludes with chords and a final melodic phrase.