

# Jingle-Bell Rock

For 2-Part\* and Piano

Performance Time: Approx. 2:00

Arranged by  
MAC HUFF

Words and Music by  
JOE BEAL and JIM BOOTHE

**Holiday rock** (♩ = 160)

Piano

*Drum intro*

*f*

C Cmaj7 C6

Handclaps

C#dim7 Dm7 F/G C7 F

Fm D7 G7 D7 G7

\*Available for 2-Part and 3-Part Mixed  
VoiceTrax CD also available

Copyright © 1957 by CHAPPELL & CO.  
Copyright Renewed  
This arrangement Copyright © 2006 by CHAPPELL & CO.  
International Copyright Secured All Rights Reserved

FREEDOMSHEETS.COM

Part I *mf*  
Jin - gle - bell, jin - gle - bell, jin - gle - bell rock. —

Part II *mf*  
Jin - gle - bell, jin - gle - bell, jin - gle - bell rock. —

D7 G7 C Gaug7

10

Jin - gle - bell swing and jin - gle - bells ring. — Snow - in' and blow - in' up

Jin - gle - bell swing and jin - gle - bells ring. — Snow - in' and blow - in' up

C6 C Dm7 G7 Dm7 G7

*mf*

13

bush - els of fun. — Now the jin - gle - hop has be - gun. —

bush - els of fun. — Now the jin - gle - hop has be - gun. —

Dm7 G7 D7 G9 Gaug7

16

19

Jin-gle bell rock,

Jin-gle-bell, jin-gle-bell, jin-gle-bell rock. — Jin-gle-bells chime in

C Cmaj7 C6 C#dim7

19

jin - gle - bell time.

jin - gle - bell time. — Dan - cin' and pran - cin' in

Dm7 G7 Dm7 G7

22

in the fros - ty air. What a

Jin - gle - bell Square — in the fros - ty air. What a

Dm7 G7 D7 G7 C7

24

27

bright — time — it's the right — time — to rock the night a -  
 bright time — it's the right time — to rock,  
 F Fm C

27

way. Jin - gle - bell — time — is a swell time —  
 rock the night a - way, is a swell time. —  
 F D7

30

35

to go glid-in' in a one-horse sleigh. — **Gid - dy - up, jin - gle-horse**  
 to go glid-in' in a one-horse sleigh. — **Gid - dy - up, jin - gle-horse**  
 G7 C Cmaj7

33

pick up your feet. — Jin - gle a - round — the clock.

pick up your feet. — Jin - gle a - round — the clock.

C6 Gm7/B<sup>b</sup> A Bm7(b5) A/C# A

36

Mix and min - gle in a jin - gl - in' beat, — that's the jin - gle - bell,

Mix and min - gle in a jin - gl - in' beat, —

F Fm D7 G7

39

that's the jin - gle - bell rock!

that's the jin - gle - bell, that's the jin - gle - bell rock!

D7 G7 D7 G7 C

Handclaps

42

45

Gaug7

48

*f* Ah,

*f* Ah,

*f* C Cmaj7 C6 C#dim7

48

ah.

ah.

Dm7 G7 Dm7 G7 Dm7 G7

51

56

What a bright — time — it's the

What a bright time — it's the

D7 G7 C7sus C7 F

54

right — time — to rock the night a - way. Jin - gle

right time — to rock, rock the night a -

Fm C

57

bell — time — is a swell time — to go glid-in' in a

way, is a swell time. — to go glid-in' in a

F D7 G7

60

one-horse sleigh. —      **Gid-dy-up, jin-gle-horse**      pick up your feet. —

one-horse sleigh. —      **Gid-dy-up, jin-gle-horse**      pick up your feet. —

C      Cmaj7      C6

63

Jin-gle a-round — the clock.      Mix and min-gle in a

Jin-gle a-round — the clock.      Mix and min-gle in a

Gm7/Bb      A      Bm7(b5)      A/C#      A      F

66

jin-gl-in' beat, —      that's the jin-gle-bell,

jin-gl-in' beat, —      that's the jin-gle-bell,

Fm      D7      G7      D7      G7

69



Handclaps

that's the jin - gle - bell rock!

that's the jin - gle - bell rock!

D7 G7 C

72

That's the jin - gle - bell rock!

That's the jin - gle - bell, jin - gle - bell, jin - gle - bell,

D9 G7 F/G G7 C Cmaj7

75

Jin - gle - bell, jin - gle - bell, jin - gle - bell rock!

jin - gle - bell rock. Jin - gle - bell, jin - gle - bell, jin - gle - bell rock!

C6 C Cmaj7 G7 C

78

## RANGES



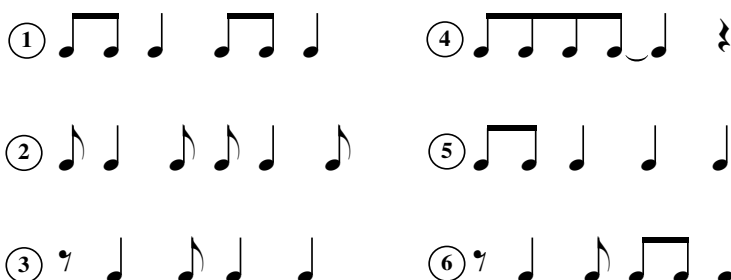
## PERFORMANCE NOTES

“Jingle-Bell Rock” was written by Joe Beal and Jim Boothe and originally performed by country singer Bobby Helms. Helms first released “Jingle-Bell Rock” as a single in 1957, reaching the top ten on the country charts. The song then uncharacteristically reappeared on the charts four out of the following five years to become an all-time favorite Christmas standard.

While the original arrangement was set in a “rockabilly” style shuffle, this arrangement is in a true driving 1950/1960s rock style. All eight notes should be sung straight (not swing style) and the piece should be performed with non-stop energy and fun, reflective of the joy found in the holiday season.

## Choral Preparation

Clap the following rhythmic patterns used in this arrangement of “Jingle-Bell Rock.” After you are familiar with them all, locate at least one example of each in the music.



## ARRANGER

Mac Huff is one of the leading arrangers and composers in the music industry. He is also an accomplished pianist, performer and teacher. Over the years he has composed and arranged music as well as served as musical director for shows at ABC-TV, NBC-TV, The Walt Disney Co., Hallmark, Inc., the Macy's Thanksgiving Day Parade, and Six Flags Show Productions. In addition, he is in demand as a lecturer and guest artist for various music festivals and workshops.



The VoiceTrax CD includes a full performance with vocals of the primary voicing, an instrumental only version, and individual part predominant tracks. A pronunciation guide is included for non-English texts.