

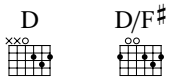
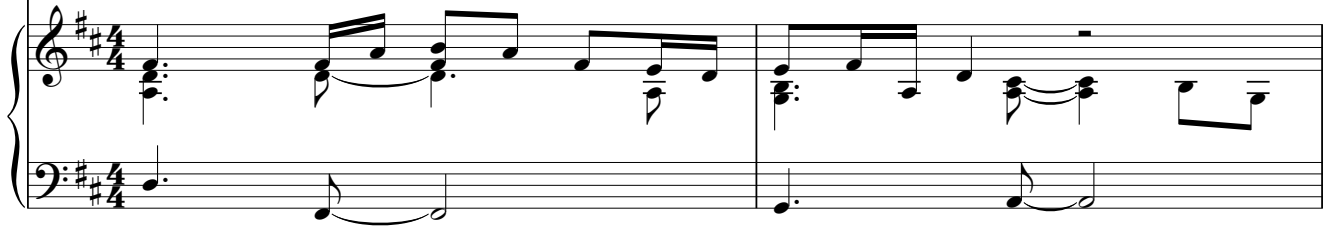
THINKING OUT LOUD

Words and Music by ED SHEERAN
and AMY WADGE

♩ = 82



1. When your legs don't work like they used to be - fore
2. When my hair's all but gone and my mem - o - ry fades



and I can't sweep you off of your feet,
and the crowds don't re-mem-ber my name.

will your mouth still re-mem-ber the
When my hands don't_ play the__





taste of my love?
strings the same way,

Will your eyes still smile from your cheeks?
I know you will still love me the same.

And dar-ling, I
'Cause hon - ey your








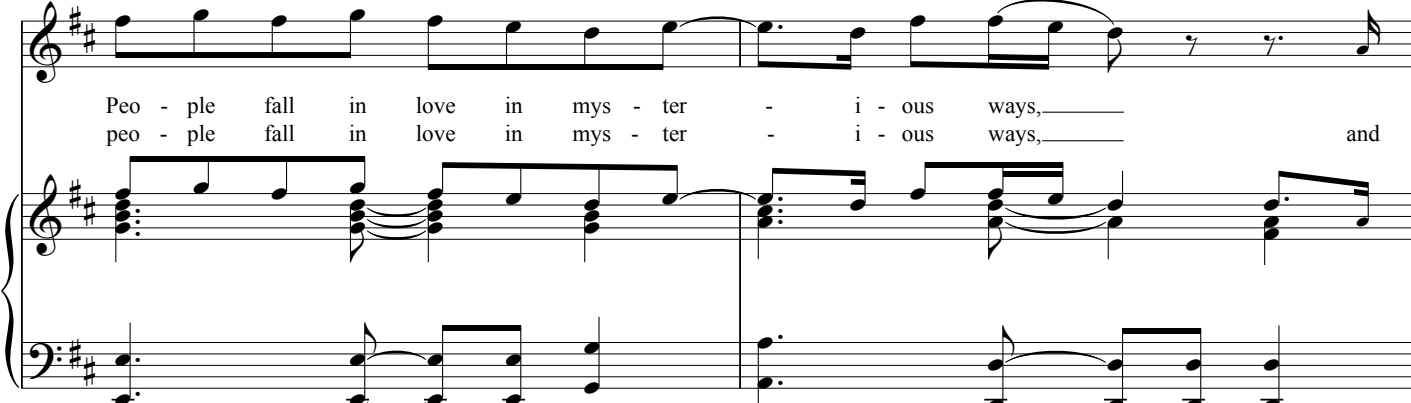
will be lov-ing you till we're se-ven-ty. And ba-by, my
 soul could nev-er grow old, it's ev-er-green. And ba-by, your





heart could still feel as hard at twen-ty-three. And I'm think-ing 'bout how
 smile's for-ev-er in my mind and mem-o-ry. And I'm think-ing 'bout how





Peo - ple fall in love in mys - ter - i - ous ways, and
 peo - ple fall in love in mys - ter - i - ous ways,

Em7 G A Em7 G

may - be just the touch of a hand.____ Well me I fall in love with you ev -
 may - be it's all part of a plan.____ Well I'll just keep on mak - ing the same_

A Bm Em7 A N.C.

ry sin - gle day.____ And I just wan - na tell you I am.____ So hon - ey now,____
 mis - takes,____ hop - ing that you'll un - der - stand.____ That ba - by now,____

D D/F# G A D D/F#

take me in - to your lov - ing arms.____

G A D D/F# G A

Kiss me un-der the light of a thou-sand stars. — Place your head on my beat-ing heart. —

To Coda ☺

D D/F# G A Bm7 A Gmaj7 D/F#

I'm think-ing out loud may-be we found love right

1. Em7 A D 2. Em7 A D

where we are. where we are.

guitar solo

D D/F# G A D D/F#

(La, la,

G A D D/F# G A

la, la, la, la, la, la, la, la, la.)

D D/F# G A *D.S. al Coda*

So, hon - ey, now, —

♢ *Coda*

Em⁷ A D Bm⁷ A Gmaj⁷ D/F#

where we are. Ba - by, we found love right

Em⁷ A D Bm⁷ A Gmaj⁷ D/F# Em⁷ A D

where we are. And we found love right where we are.