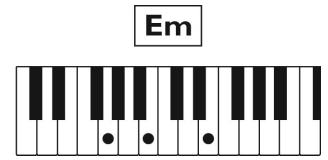
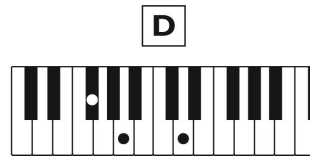
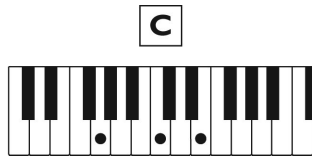
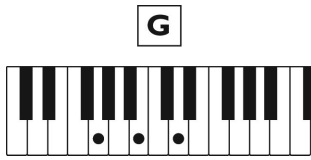


# IN THE END

Words & Music by Chester Bennington, Mike Shinoda, Rob Bourdon, Joseph Hahn & Brad Delson

© Copyright 2000 Zomba Enterprises Incorporated/Zomba Songs Incorporated, USA.  
Zomba Music Publishers Limited.  
All Rights Reserved. International Copyright Secured.



Voice: **Synth. Lead**  
Rhythm: **House/Electric Blues**  
Tempo: ♩ = 106

**D** **Em**

1. It starts with one thing, I don't know why, it  
2. One thing, I don't know why, it

**D** **C**

does-n't ev-en mat-ter how hard you try, keep \_\_\_ that in mind. I de-signed this rhyme to ex-plain\_  
does-n't ev-en mat-ter how hard you try, keep \_\_\_ that in mind. I de-signed this rhyme to re-mind\_

**D** **Em**

\_\_\_ in due time, all I know. Time is a val-u-'ble thing, watch\_  
\_\_\_ my-self how I tried so hard in spite of the way you were mock-in' me,

**D**

\_\_\_ it fly by as the pen-du-lum swings, watch\_\_\_  
act-in' like I was part of your pro-per-ty. \_\_\_

**C** **D**

\_\_\_ it count down to the end of the day; the clock ticks life a-way. It's so un-  
\_\_\_ Re-mem-ber-ing all the times you fought with me, I'm sur-prised it got so far.

**Em** **D**

real. Did-n't look out be - low; watch the time go right out the win - dow. Try'n  
Things ar-en't the way they were be-fore, you would-n't ev-en re-cog-nize me a - ny-more.

**C** **D**

— to hold on, but did - n't ev - en know. I wast - ed it all just to watch you  
— Not that you knew me back then, but it all comes back to me in the

**Em** **D**

go. I kept ev - 'ry-thing in - side and ev - en though I tried, it all fell a - part. }  
end. You kept ev - 'ry-thing in - side and ev - en though I tried, it all fell a - part. }

**C** **D**

What it meant to me will e - ven-tual - ly be a me - mo - ry of a time when... I tried so

**Em** **G** **D**

hard and got so far but in the end, it does - n't ev - en mat -

**C** **Em** **G**

- ter. I had to fall to lose it all but in the end,

**D** **To Coda** **C** **C**

— it does - n't ev - en mat - ter. - ter.

Em D

— I've put my trust — in you, — pushed as far —

C D Em

— as I — can — go. — For — all this, — there's on - ly one —

D C

— thing you — should — know. — I've put my trust —

Em G D

— in you, — pushed as far — as I — can — go. —

C Em

— For all this — there's on - ly one —

G D C *D.S. al Coda*

— thing you — should — know. — I tried so

**Coda**

C Em D C D Em

— ter. —