

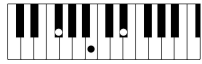
Dock Of The Bay

Words and Music by Otis Redding & Steve Cropper

G



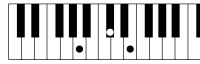
B



C



A



Esus²



E



Voice: **Rock Organ**

Rhythm: **Country Rock**

Tempo: ♩ = 100

G

B

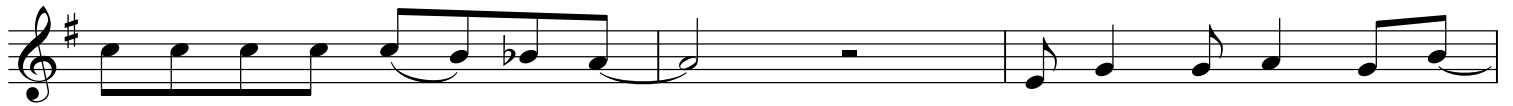


Sit - tin' in the morn - in' sun, _____ I'll be

C

A

G



sit - tin' when the eve - nin' come. _____ Watch - ing the ships roll in, _____

B

C

A



_____ then I watch 'em roll a - way a - gain. _____ I'm

G

Esus²



sit - tin' on the dock of the bay, _____ watch - ing the tide _____

© Copyright 1967 East Memphis Music Corporation/Cotillion Music Incorporated/Irving Music Corporation, USA.
Rondor Music (London) Limited (75%) (administered in Germany by Rondor Musikverlag GmbH)/Warner/Chappell Music Limited (25%).

G **Esus2** **G**

roll a - way. Just sit - tin' on the dock of the bay,

A **G** **E**

wast - in' time.

G **B**

Sit - tin' here, rest - in' my bones. and this lone -

C **A** **G**

- li - ness won't leave me a - lone. It's two thou - sand miles I roamed

B **C** **A**

just to make this dock my home. Now I'm just gon - na

G **Esus2**

sit at the dock of the bay, watching the tide.

G **Esus2** **G**

roll away. Just sit-tin' on the dock of the bay.

A **G** **E**

wast-in' time. *Whistle*

G

E

Repeat and fade